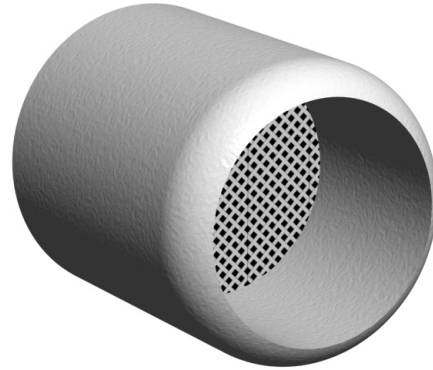


Features

- ⊕ Can be placed in a tube for damping the acoustical output of a receiver
- ⊕ ABS housing
- ⊕ Housing Color identifies the acoustic resistance
- ⊕ Rounded corners assures easy mounting in tube



Contents

	Page
History Revision	2
Mechanical Specifications	3
Acoustical Specifications	3
Material Specifications	3
Environmental Conditions	3
Mechanical Dimensions	4
SSD Tool	4
Packaging	4
Product Specification Form	5

Sonion reserves the right to make changes at any time to improve reliability, function or design, in order to provide the best product possible.

History Revision

Revision Number/Date	Change from last revision
01 / May 06	1 st revision.
02 / Sep 06	Dimensions corrected. Allowed forces corrected. Item numbers added.
03 / Oct 06	Allowed forces corrected.
04 / Mar 07	Acoustic resistance tolerance changed to 25 %
05 / Mar 07	Material changed from PP to ABS. Durability increased to 6 N. SSD 03 added.
06 / May 07	SSD 04, SSD 05, SSD 06, and SSD 07 added.
07 / Oct 07	Hydrophobic mesh removed. White screen color added
MT1026.G (07/08)	No technical updates
MT1026.H (11/08)	Dimensions drawing updated
MT1026.I (02/09)	SSD tool added
008/JUL-22-2009	No technical updates
009/MAY-27-2010	Screen material corrected to PET. Operational humidity and temperature removed

Mechanical Specifications

Durability:

- Allowed radial force Max. 6 N
- Allowed axial force Max. 25 N

Acoustical Specifications

Type	Color	Acoustic Resistance			Unit, Rac	Item number
		Min.	Nom.	Max.		
SSD 01	White	510	680	850	Ohm	9910-3013392
SSD 02	Green	1125	1500	1875	Ohm	9910-3013393
SSD 03	Red	1650	2200	2750	Ohm	9910-3015351
SSD 04	Grey	240	320	400	Ohm	9910-3015657
SSD 05	Brown	750	1000	1250	Ohm	9910-3015658
SSD 06	Orange	2475	3300	4125	Ohm	9910-3015659
SSD 07	Yellow	3525	4700	5875	Ohm	9910-3015660

Other resistances available upon request

Material Specifications

All materials comply with RoHS directive (2002/95/EC)

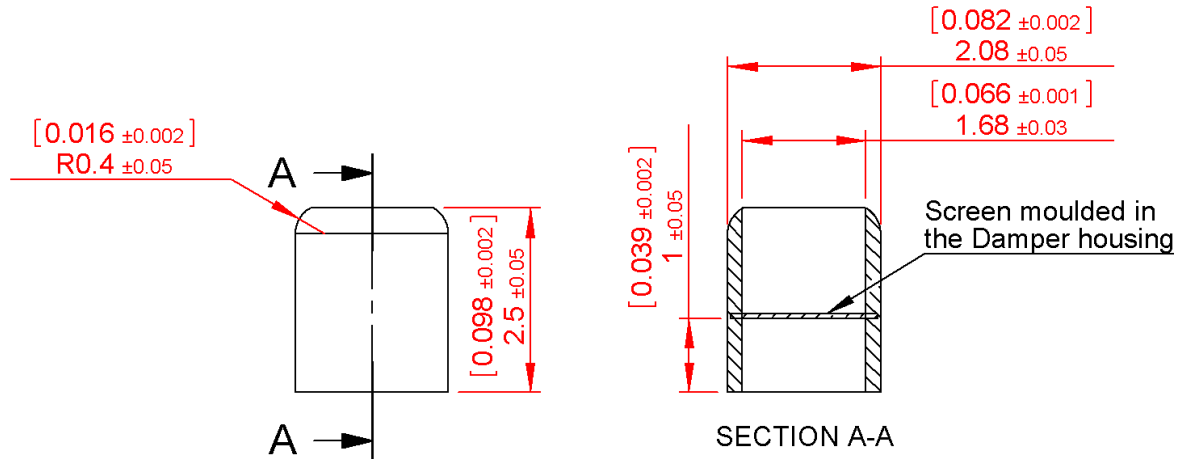


- Housing ABS
- Screen PET, black or white

Environmental Conditions

- Storage temperature -40 to + 60°
- Storage humidity 10 to 95% RH

Mechanical Dimensions

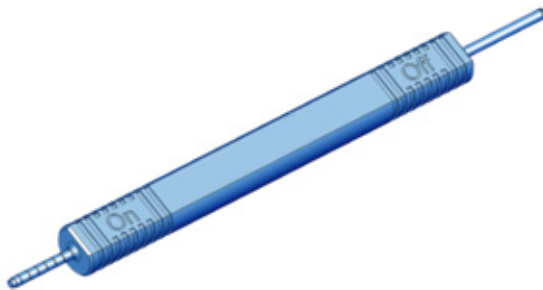


Note:

The standard measurement tolerance on the drawings is ± 0.05 mm/[0.002"]. Tolerances which differ from this value will be indicated on the drawings.

SSD Tool

The SSD tool is used for mounting and dismounting the SSD. The 'On' tip has 2 mm indications for depth measurements. The 'Off' tip has a thread for holding the SSD securely while extracting it.



Item number: 9911-3020065

Packaging

Packaging.....	Bulk
Box dimension (l*w*h)	117 mm*105 mm*13 mm
Pieces per box.....	100, -0%, +5%

Product Specification Form

Name: _____

Company: _____

Customer Part No.: _____

Parameters	Look at Page	Enter your choices	Guidelines
Model	3		SSD 01, SSD 02, SSD 03, SSD 04, SSD 05, SSD 06, or SSD 07

SSD Tool is ordered and delivered separately Item number: 9911-3020065