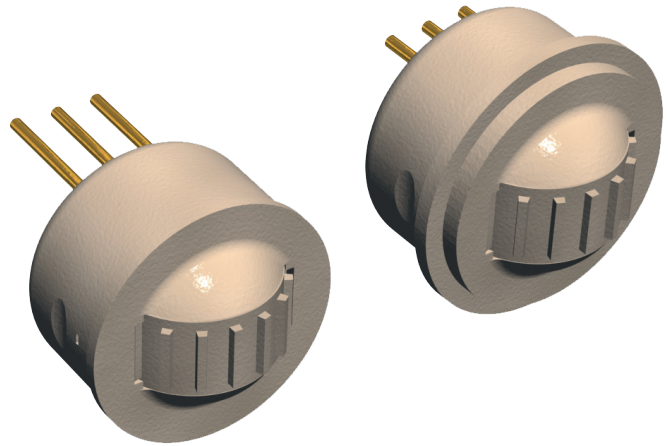


Features

- ⊕ For ITE and BTE
- ⊕ Size compatible to PJ 88/DCU 193
- ⊕ User-friendly interface
- ⊕ BTE style linear rotation
- ⊕ Tight fit between BTE shells and housing gives:
 - Reduced humidity exposure
 - Reduced acoustic leakage/feedback



Contents

	Page
History Revision	2
Mechanical Specifications	3
Electrical Specifications	4
Material Specifications	5
Environmental Conditions	5
Recommended Process Parameters	5
Mechanical Dimensions	6
Housing Styles	6
Knob Plastic Colors	7
Housing Plastic Colors	7
Terminal Length	7
Product Specification Form	8

Sonion reserves the right to make changes at any time to improve reliability, function or design, in order to provide the best product possible.

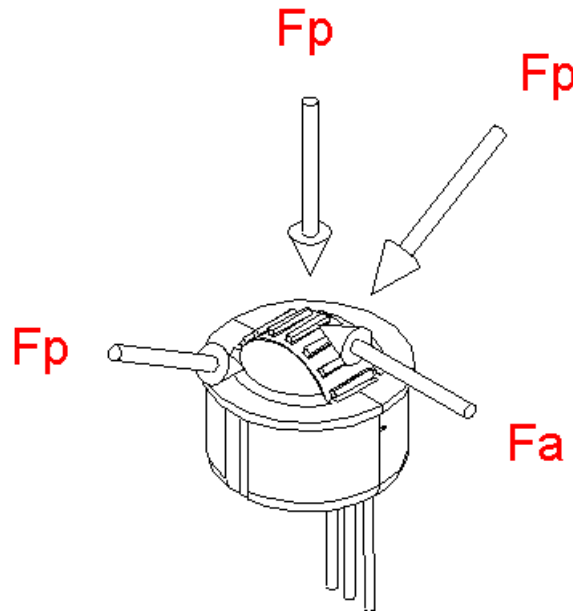
History Revision

Revision Number/Date	Change from last revision
MT1044.A (12/08)	History Revision added.
001/JUL-07-2009	No technical updates

Mechanical Specifications

Rotational angle, mechanical.....	250° ±5°
Rotational angle, mechanical.....	250° ±5°
Rotational angle	Continuous rotation, no end stop
Rotational speed	Min. 4 rpm. Max. 120 rpm
Activation force (Fa)	Max. 0.45 N
Terminal retention force.....	Min. 5 N
Bending of terminals	Min. 1 bending cycle 90°, with 0.25 N load
Lifetime	Min. 10,000 cycles 1 cycle = 360° CW followed by 360° CCW rotation
Durability of knob (Fp).....	Max. 10 N

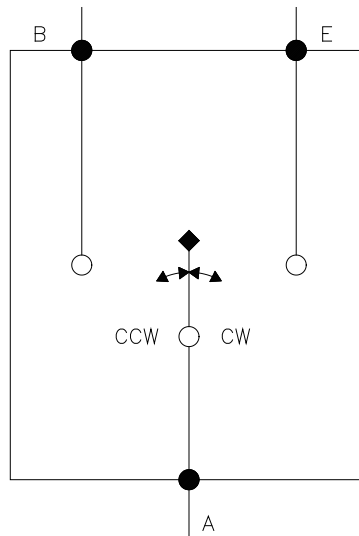
Force definitions:



Electrical Specifications

Contact resistance.....	Max. 500 mΩ
Number of pulses per rotation.....	10
Insulation resistance.....	Min. 1 MΩ
Parasitic capacitance.....	Max. 10 pF between any two leads
Switching current.....	Max. 0.1 mA
Pulse width.....	3° - 10°
Bounce time.....	Max. 20 ms. Measured at 25 rpm, 2μA and 0.7 V
Inaccuracy of pulse generation.....	Max. 1 pulse per 100 pulses. Measured at 25 rpm

Switching Diagram



Material Specifications

All materials comply with RoHS directive (2002/95/EC)



Terminals.....	AgCu3, gold flash plated
Housing	PA 6.6, glass reinforced
Knob	POM
Base.....	LCP

Lubricant, glue / seal, and paint are proprietary information.

Environmental Conditions

Storage temperature	-40 to + 60°C
Storage humidity.....	10 to 95% RH

Recommended Process Parameters

Gluing:

Types of glue..... Cyanoacrylates (non-blooming) , i.e. Loctite 401, 408, 460 and Sicomet 50, 63, 77
Non-blooming types must be used to ensure that residuals from the curing process do not degrade the component.

Soldering:

Soldering temperature and time..... 300°C [572°F] for 3 s or 350°C [662°F] for 1 s
Soldering distance..... Min. 0.3 mm [0.012"] from housing
Exceeding temperature, time and distance recommendations may damage the component. Mechanical stress on soldering terminals must be avoided during soldering.

Cleaning:

Cleaning solvents..... Aqua wash (Alpha 2110), Benzine
Ultrasonic cleaning must be avoided as it may remove the lubricant inside the component.

Knob Plastic Colors

Please refer to the series 500 included in the Sonion 'Plastic Color Assortment' binder.

Housing Plastic Colors

Please refer to the series 100 included in the Sonion 'Plastic Color Assortment' binder.

Terminal Length

Housing style 01: 0.8 mm or 10 mm
Housing style 02: 0.8 mm

Product Specification Form

Name: _____

Company: _____

Customer Part No.: _____

Parameters	Look at Page	Enter your choices	Guidelines
Model	1	DCU Scroller	
Housing Style	5		Please enter no. 01 or 02
Knob Plastic Colors	6		Please refer to the series 500 included in the Sonion 'Plastic Color Assortment' binder
Housing Plastic Colors	6		Please refer to the series 100 included in the Sonion 'Plastic Color Assortment' binder
Terminal length	6		Housing style 01: 0.8 mm or 10 mm Housing style 02: 0.8 mm