

# Data Sheet



receiver 38AM007M/8a

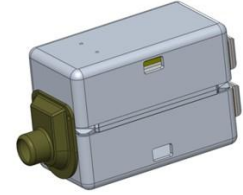
3380 - 3023307  
Version: 2 15-JUN-2011

## Description

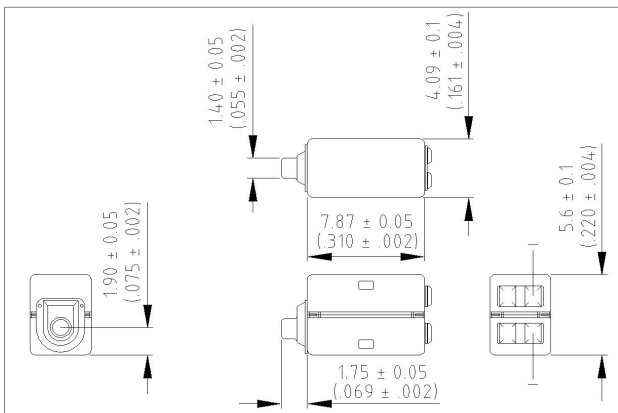
Miniature magnetic receiver (balanced armature type) for use in hearing instruments.

## Features

- Perfect for higher power premium BTE applications
- Tandem, twin-motor performance
- Significantly reduced mechanical vibration
- Improved magnetic radiation
- Same the size as a 3300 receiver



## Dimensions in mm (inch)

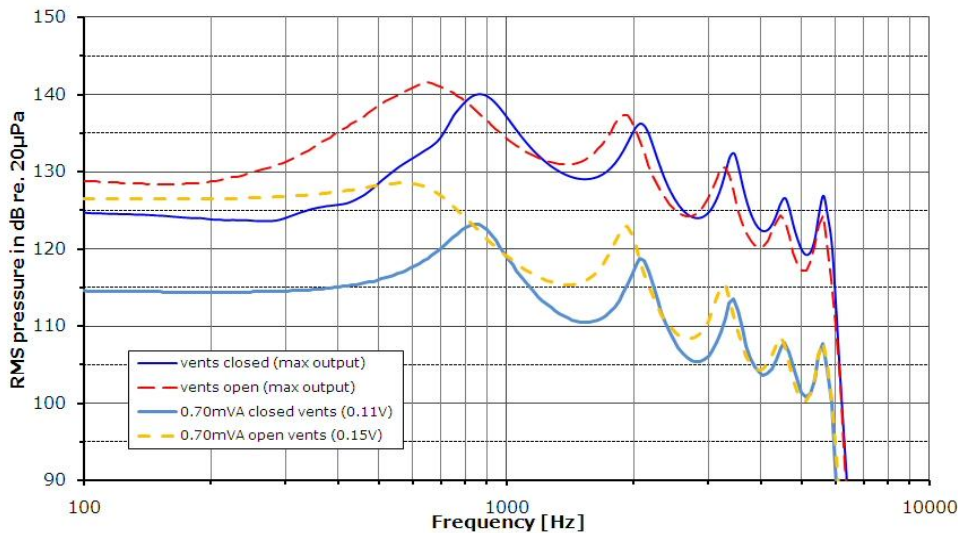


## Mechanical Data

Weight	0.6 gr.
Case material	Ni80Fe15Mb5
Solder pad content	Sn96.5Ag3.0Cu0.5
Dimensions	Refer to outline drawing

## Typical response curve

The acoustic termination consists of: 8 mm x 1 mm ID + 28 mm x 1.5 mm ID + 25 mm x 2 mm ID + 18 mm x 3 mm ID + 2 cc coupler. Max output measured with voltage drive limited by 0.92 V or 10% THD.



Sonion reserves the right to make changes at any time to improve reliability, function or design, in order to provide the best product possible. Receivers series of this type can produce very high sound pressure levels. When such receivers are applied in hearing instruments or other communications equipment special attention should be paid to this capacity in order to prevent possible hearing damage.

# Data Sheet



receiver 38AM007M/8a

3380 - 3023307  
Version: 2 15-JUN-2011

## Specifications

The acoustic termination consists of: 8 mm x 1 mm ID + 28 mm x 1.5 mm ID + 25 mm x 2 mm ID + 18 mm x 3 mm ID + 2 cc coupler. Drive is voltage drive of 0.70 mVA RMS at 500 Hz unless specified otherwise.  
Environmental conditions: 23 °C (73.4F), 50 %RH.

Acoustic parameters		Closed Vents			Open Vents			Unit	Comments
		Mn	Typ	Max	Mn	Typ	Max		
Sensitivity	@ 200 Hz	111	114	117	124	127	130	dB	
	@ 300 Hz	111.5	114.5	117.5	124	127	130	dB	
	@ 500 Hz	113	116	119	125.5	128.5	131.5	dB	
Peak 1	frequency	600	850	1100	450	600	750	Hz	
	output	121	123.5	126	126	128.5	131	dB	
Valley 1	frequency	1250	1500	1750	1150	1400	1650	Hz	
	output	107	110		112	115		dB	
Peak 2	frequency	1800	2050	2300	1650	1900	2150	Hz	
	output	116	118.5	121	120	122.5	125	dB	
Valley 2	frequency	2550	2800	3050	2450	2700	2950	Hz	
	output	102	105		105	108		dB	
Peak 3	frequency	3100	3350	3600	2950	3200	3450	Hz	
	output	110.5	113	115.5	113	115.5	118	dB	
THD	@ 1/3 peak			6			9	%	@ 0.15 V input
	@ 1/2 peak			6			12	%	@ 0.20 V input

Electric parameters	Mn	Typ	Max	Mn	Typ	Max	Unit	Comments
Impedance @ 1000 Hz parallel	16	20	24	15	19	23	Ohm	
Impedance @ 500 Hz parallel	14	18	22	29	34	39	Ohm	
DC resistance @ 20 °C parallel	11	12.5	14	11	12.5	14	Ohm	
DC bias current range	zero bias							

Additional parameters	Mn	Typ	Max	Unit	Comments
Shock resistance		8000		g	90% survival rate
Storage temperature range	-40		63	°C	

A positive voltage applied to the negative terminal (-) will result in an increase in pressure at the sound outlet.

Sonion reserves the right to make changes at any time to improve reliability, function or design, in order to provide the best product possible.  
Receivers series of this type can produce very high sound pressure levels. When such receivers are applied in hearing instruments or other communications equipment special attention should be paid to this capacity in order to prevent possible hearing damage.